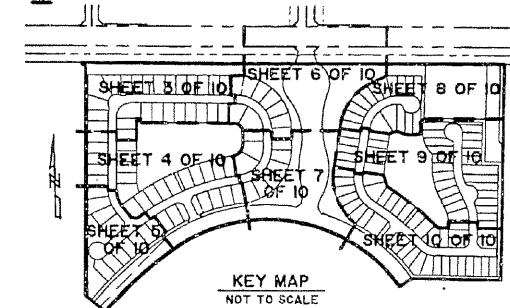


# THE ISLES AT WELLINGTON PLAT 1

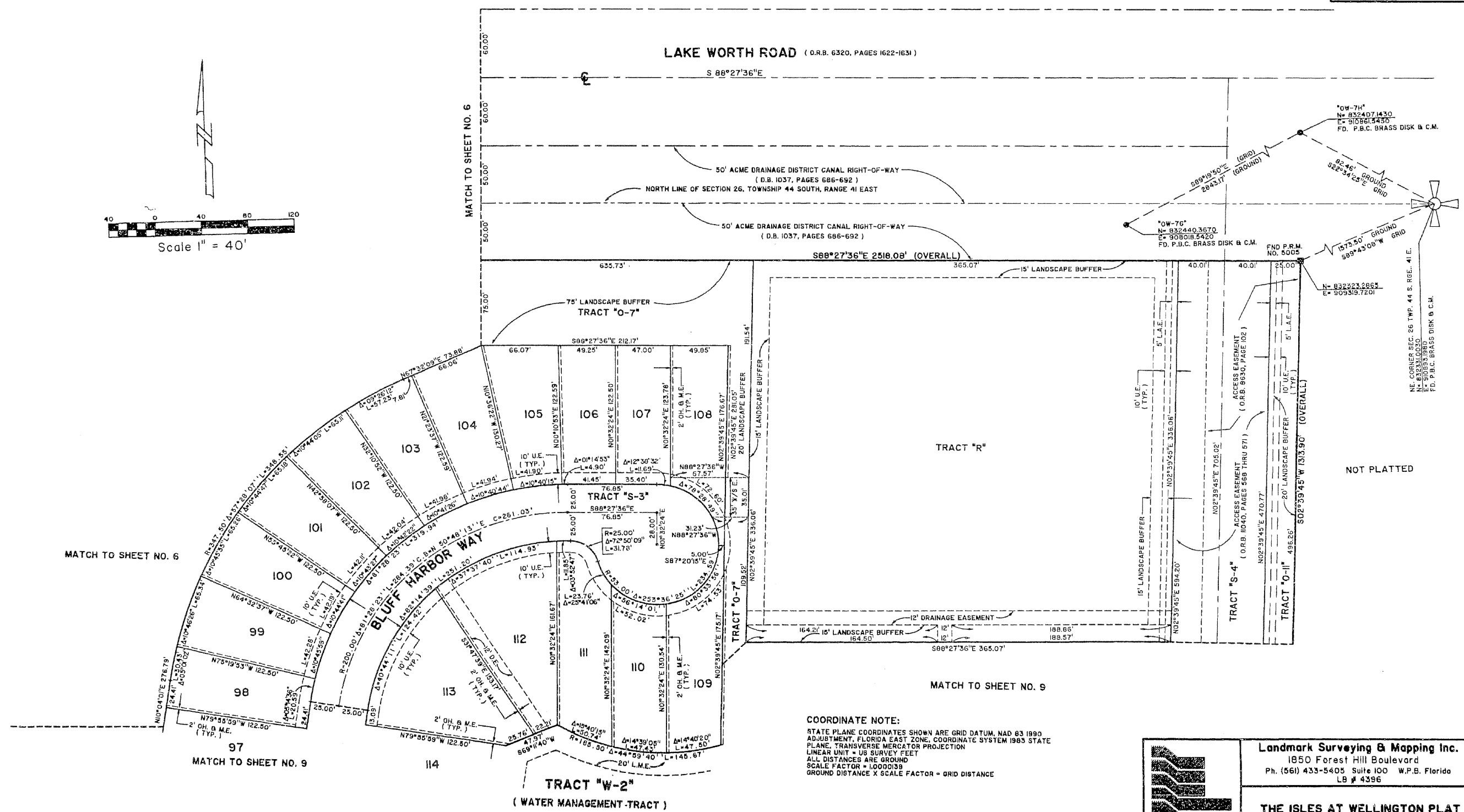
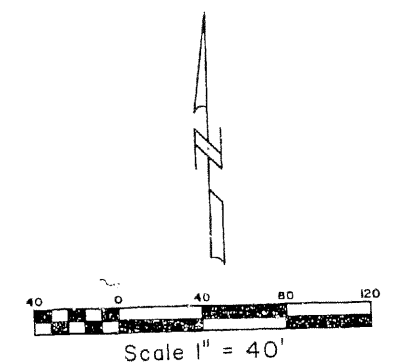
A PORTION OF THE ORANGE POINT P.U.D.  
 LYING IN SECTION 26, TOWNSHIP 44 SOUTH, RANGE 41 EAST,  
 VILLAGE OF WELLINGTON, PALM BEACH COUNTY, FLORIDA.  
 SHEET 8 OF 10

94



STATE OF FLORIDA 55  
 COUNTY OF PALM BEACH  
 THIS PLAT WAS FILED FOR RECORD AT  
 M. THIS DAY OF 19  
 AND DULY RECORDED IN PLAT BOOK NO.  
 ON PAGE  
 DOROTHY H. WILKEN,  
 CLERK OF THE CIRCUIT COURT  
 BY \_\_\_\_\_ D.C.

ORANGE POINT SECTION 23  
 (PLAT BOOK 79, PAGES 127-132)



COORDINATE NOTE:  
 STATE PLANE COORDINATES SHOWN ARE GRID DATUM, NAD 83 1989  
 ADJUSTMENT, FLORIDA EAST ZONE, COORDINATE SYSTEM 1983 STATE  
 PLANE, TRANSVERSE MERCATOR PROJECTION  
 LINEAR UNIT = US SURVEY FEET  
 ALL DISTANCES ARE GROUND  
 SCALE FACTOR = 1.0000139  
 GROUND DISTANCE X SCALE FACTOR = GRID DISTANCE



Landmark Surveying & Mapping Inc.  
 1850 Forest Hill Boulevard  
 Ph. (561) 433-5405 Suite 100 W.P.B. Florida  
 LB # 4396

THE ISLES AT WELLINGTON PLAT 1